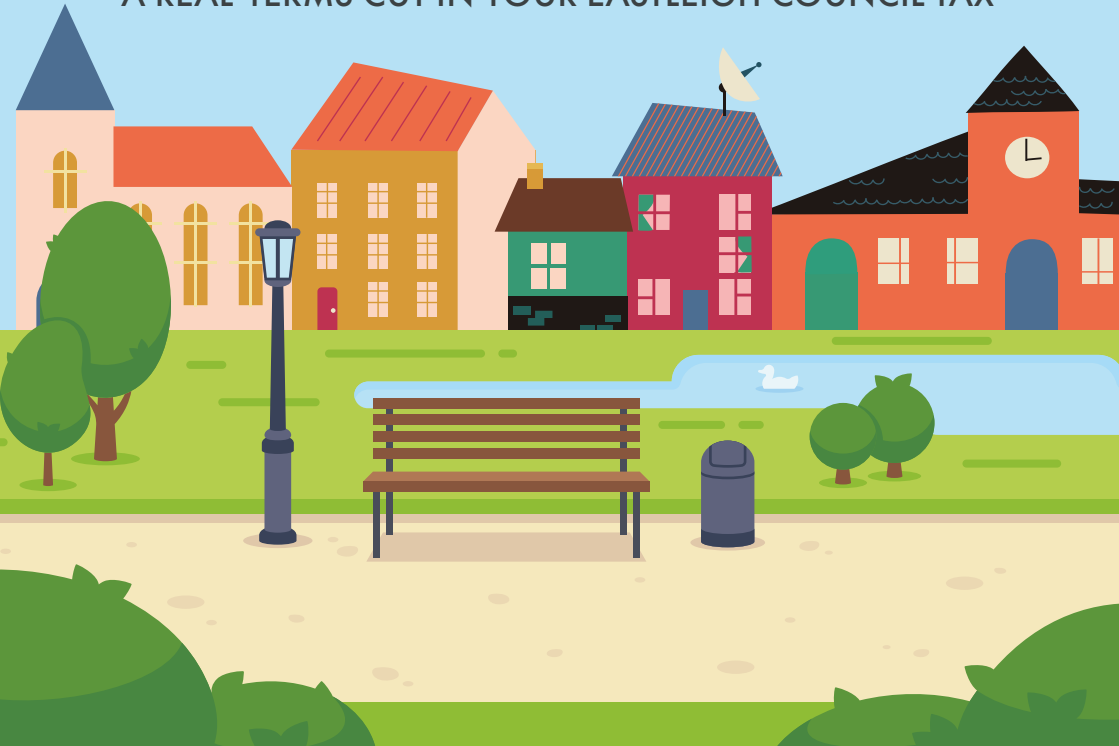


SUPPORTING COMMUNITIES IMPROVING LIVES

YOUR COUNCIL TAX 2024-25

21 YEARS OF HIGH-QUALITY SERVICE DELIVERY WITH
A REAL-TERMS CUT IN YOUR EASTLEIGH COUNCIL TAX



Over 30,000 residents receive their
Council Tax bill by email, sign up today:
eastleigh.gov.uk/counciltaxebill



We are committed to delivering high quality, value-for-money services. The Eastleigh Borough Council element of your Council Tax bill reflects a real term cut for the 21st consecutive year.

This year the average Eastleigh Borough Council element for a Band D household is **£141.66** or **£2.72** per week.

SOME OF OUR ACHIEVEMENTS LAST YEAR INCLUDED:



Completed a series of walking trails wayfinding markers and artwork on the Hamble peninsula



Purchased three electric waste bin lorries, the first in Hampshire

Provided a new facility to replace Freespace Skate Park, Eastleigh

Worked with Fair Oak & Horton Heath Parish Council to complete the community café and Splash Pad at New Century Park

Completed the development of Bampton House that provided 13 temporary flats for vulnerable residents

Opened new play areas at Kingfisher Park, Bursledon and Chancellor Park Boorley Park

Approved plans for 103 hectares of green space on farmland at Stoke Park Farm, Bishopstoke

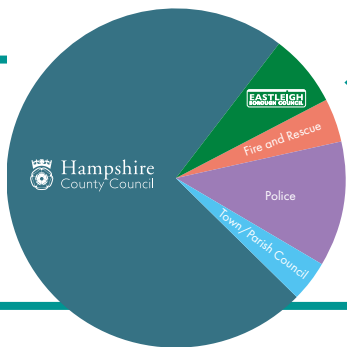
Completed work on £3.3million of improvements to Itchen Valley Country Park including new paths and trails and a new community building

Established coffee pod recycling - the only scheme in Hampshire

Extended the size of Fleming Park paddling pool to allow more local residents to enjoy this popular free facility

Worked in partnership with Henty to complete new showrooms on Leigh Road Eastleigh

Refurbished Eastleigh bus station toilets and added new seating, litter bins and lighting



DID YOU KNOW?

Just 7% of your total Council Tax bill goes to Eastleigh Borough Council.

SOME OF OUR PLANS FOR THIS YEAR WILL BE TO:



Complete a new link road and start work on building the first homes at One Horton Heath – the most sustainable housing development in the Borough



Create tree and bee corridors in Fair Oak and Bishopstoke to encourage greater biodiversity

Complete the redevelopment of the old Post Office in Eastleigh town centre

Commence work on new homes at Hanns Way and Nightingale Avenue, Eastleigh

Begin work on 18 new flats and convenience store at Queens View, Netley

Promote additional community, music, comedy and arts events at The Berry Theatre, Hedge End and The Point, Eastleigh

Upgrade the footpath and cycleway to Hedge End station and create an environmental maintenance plan for Cheltenham Gardens pond, Grange Park

Continue to roll out more EV charging points across the Borough

Complete work on a new ground source heat pump scheme at Burnetts Lane to provide green energy

Install new National Lottery funded Public Art at Hiltingbury Recreation Ground

Install new artwork at Hatch Farm, West End

Work with Newt Conservation Partnership to create new habitat for Great Crested Newts at Stoke Park

Let's get it sorted

Only these items go in your recycling bin



only plastic bottles



tins and cans



empty aerosols



cardboard
(no takeaway pizza boxes)



paper



Scan the QR code or visit eastleigh.gov.uk/recycle

EASTLEIGH
BOROUGH COUNCIL

recycle
for Eastleigh Borough



JOIN OUR GARDEN WASTE SCHEME

Don't waste time and fuel
booking a trip to the tip

Join over 24,000 other borough
residents and sign up today.

Starts on 1 April



Sign up at eastleigh.gov.uk/gardenwaste

