

PROJECT
Partnership for South Hampshire Strategic Flood Risk Assessment

CLIENT
Portsmouth City Council on behalf of Eastleigh Borough Council

CONSULTANT
AECOM Limited
Sunley House
4 Bedford Park
Croydon, CR0 2AP
www.aecom.com

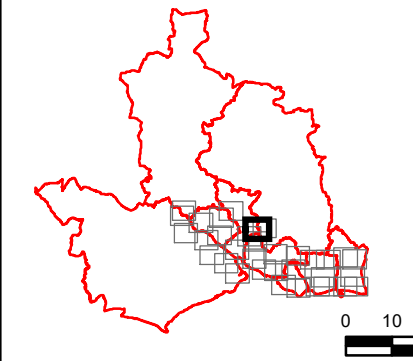
LEGEND

- Local Authority Boundary
- Southampton Model Extent

Maximum Flood Depth: Undefended 1 in 200 Year (0.5% AEP) 2122 Upper End

	0.0 - 0.1
	0.1 - 0.5
	0.5 - 1.0
	1.0 - 1.5
	1.5 - 2.0
	2.0 - 2.5
	2.5 - 5.0
	>5.0

OVERVIEW



NOTES
© Environment Agency copyright and/or database right 2022.
Reproduced from Ordnance Survey digital map data © Crown copyright 2022. All rights reserved. Licence number 0100031673.

This map is intended to provide a strategic overview and should not be used to assess individual properties. Refer to the accompanying SFRA Report for details of the datasets and purpose of their use.

ISSUE PURPOSE

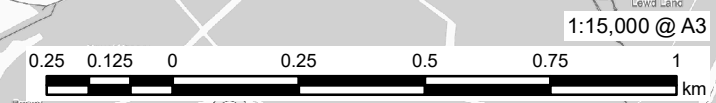
For Information

PROJECT NUMBER
60653132

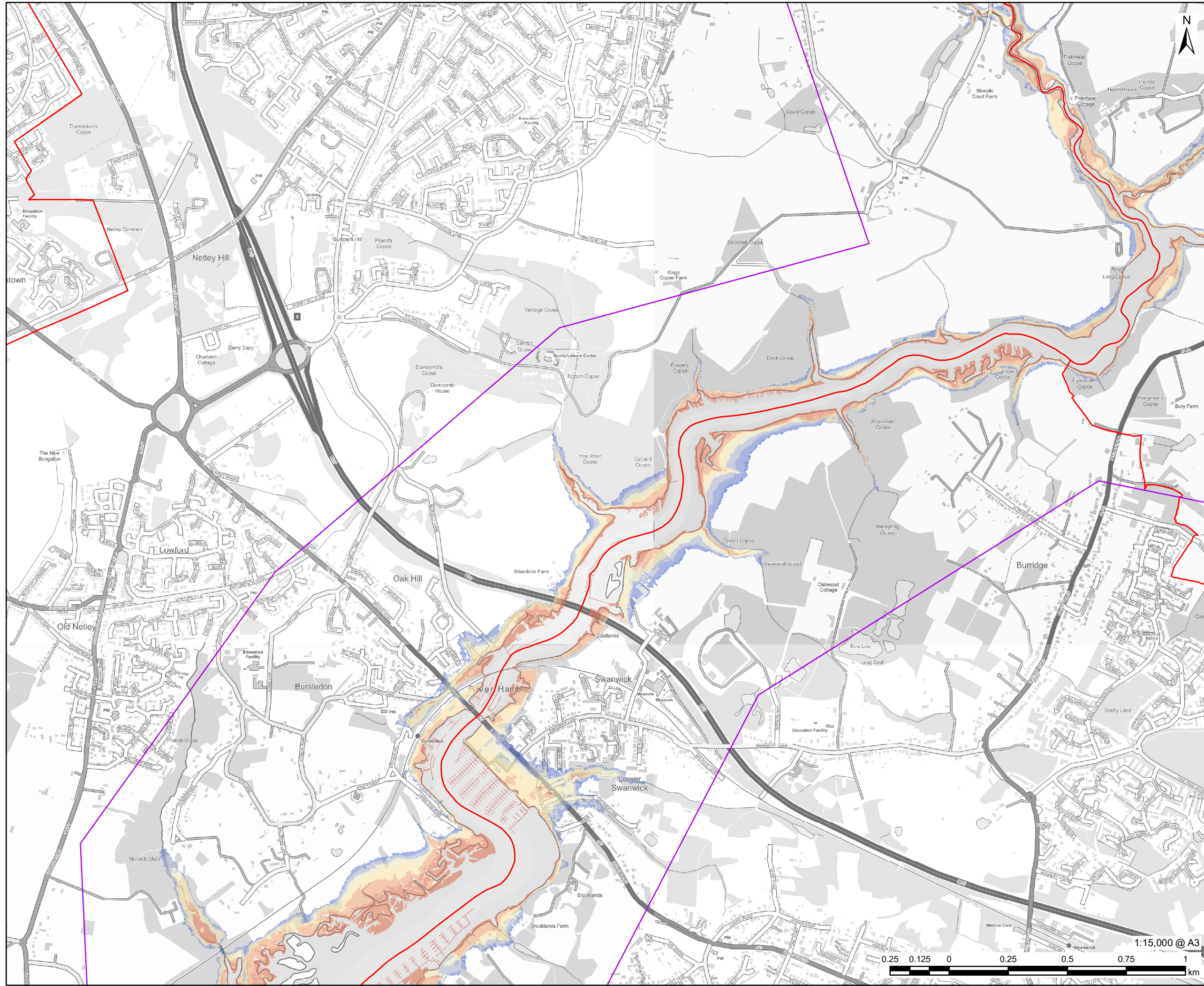
FIGURE TITLE
Maximum Flood Depth: Undefended 1 in 200 Year (0.5% AEP) 2122 Upper End
Sheet 1 of 4

FIGURE NUMBER

Figure 8



The drawing has been prepared for the use of AECOM's client. It may not be used, modified, reproduced or relied upon by third parties, except as agreed by AECOM or as required by law. AECOM accepts no responsibility, and denies any liability whatsoever, to any party that uses or relies on this drawing without AECOM's express written consent. Do not scale this document. All measurements must be obtained from the stated dimensions.



PROJECT
Partnership for South Hampshire
Strategic Flood Risk Assessment

CLIENT
Portsmouth City Council on behalf of
Eastleigh Borough Council

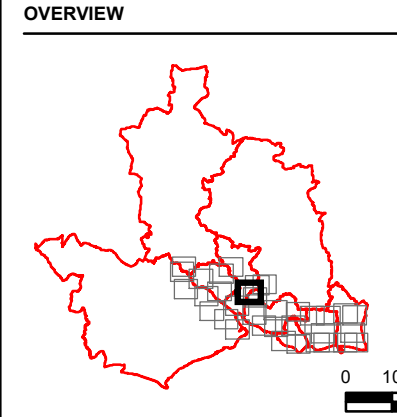
CONSULTANT
AECOM Limited
Sunley House
4 Bedford Park
Croydon, CR0 2AP
www.aecom.com

LEGEND

- Local Authority Boundary
- Southampton Model Extent

**Maximum Flood Depth: Undefended
1 in 200 Year (0.5% AEP) 2122 Upper
End**

	0.0 - 0.1
	0.1 - 0.5
	0.5 - 1.0
	1.0 - 1.5
	1.5 - 2.0
	2.0 - 2.5
	2.5 - 5.0
	>5.0



NOTES

© Environment Agency copyright and/or database right 2022.
Reproduced from Ordnance Survey digital map data © Crown copyright 2022. All rights reserved. Licence number 0100031673.

This map is intended to provide a strategic overview and should not be used to assess individual properties. Refer to the accompanying SFRA Report for details of the datasets and purpose of their use.

ISSUE PURPOSE
For Information

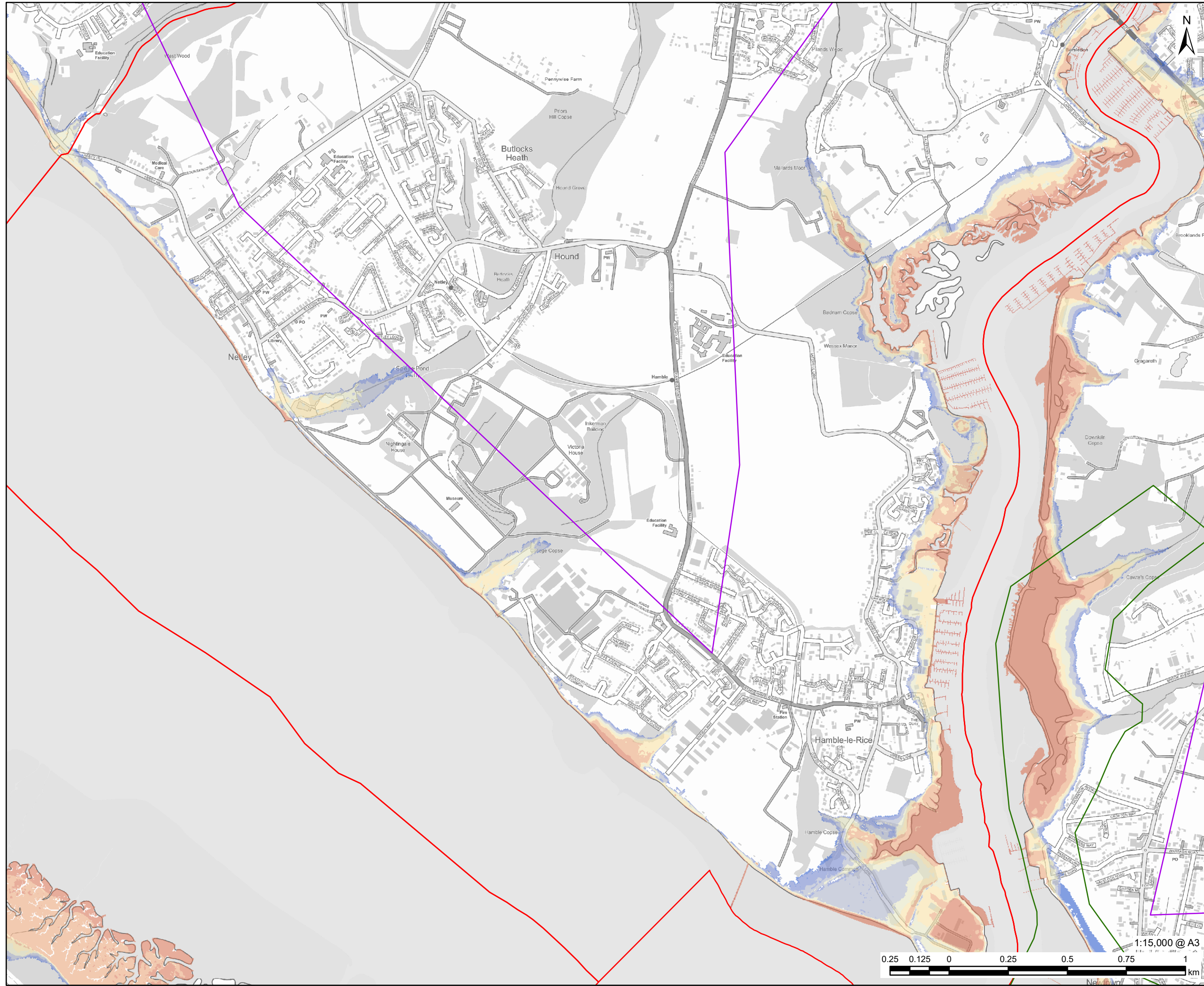
PROJECT NUMBER
60653132

FIGURE TITLE
Maximum Flood Depth: Undefended 1
in 200 Year (0.5% AEP) 2122 Upper
End
Sheet 2 of 4

FIGURE NUMBER
Figure 8



The drawing has been prepared for the use of AECOM's client. It may not be used, modified, reproduced or relied upon by third parties, except as agreed by AECOM or as required by law. AECOM accepts no responsibility, and denies any liability whatsoever, to any party that uses or relies on this drawing without AECOM's express written consent. Do not scale this document. All measurements must be obtained from the stated dimensions.



1:15,000 @ A3



PROJECT
Partnership for South Hampshire Strategic Flood Risk Assessment

CLIENT
Portsmouth City Council on behalf of Eastleigh Borough Council

CONSULTANT
AECOM Limited
Sunley House
4 Bedford Park
Croydon, CR0 2AP
www.aecom.com

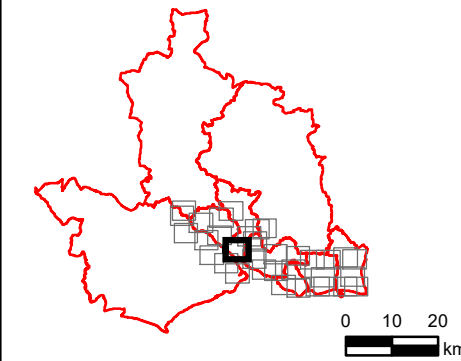
LEGEND

- Local Authority Boundary
- Southampton Model Extent
- Gosport Model Extent

Maximum Flood Depth: Undefended 1 in 200 Year (0.5% AEP) 2122 Upper End

	0.0 - 0.1
	0.1 - 0.5
	0.5 - 1.0
	1.0 - 1.5
	1.5 - 2.0
	2.0 - 2.5
	2.5 - 5.0
	>5.0

OVERVIEW



NOTES

© Environment Agency copyright and/or database right 2022.
Reproduced from Ordnance Survey digital map data © Crown copyright 2022. All rights reserved. Licence number 0100031673.

This map is intended to provide a strategic overview and should not be used to assess individual properties. Refer to the accompanying SFRA Report for details of the datasets and purpose of their use.

ISSUE PURPOSE

For Information

PROJECT NUMBER

60653132

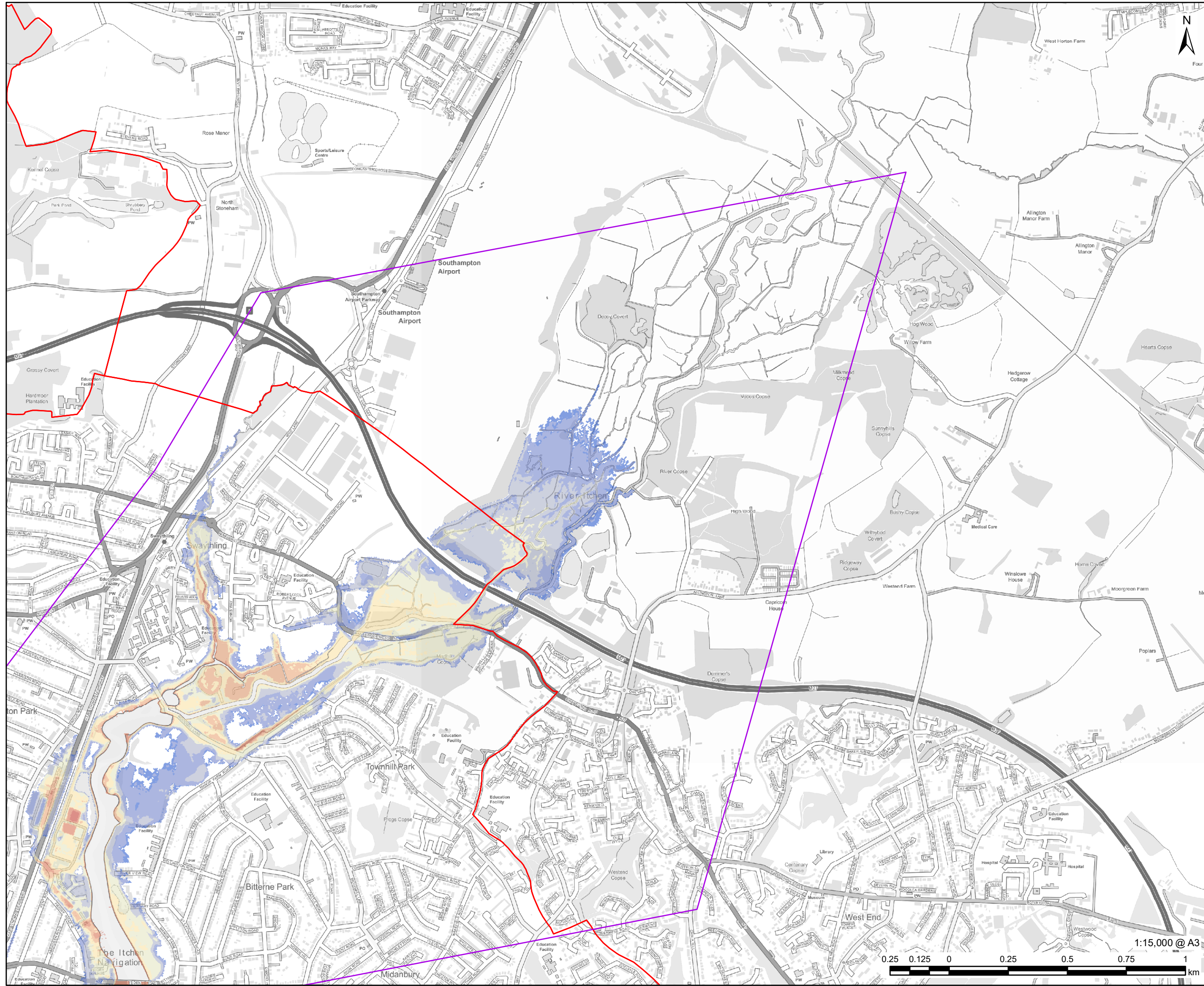
FIGURE TITLE

Maximum Flood Depth: Undefended 1 in 200 Year (0.5% AEP) 2122 Upper End
Sheet 3 of 4

FIGURE NUMBER

Figure 8

The drawing has been prepared for the use of AECOM's client. It may not be used, modified, reproduced or relied upon by third parties, except as agreed by AECOM or as required by law. AECOM accepts no responsibility, and denies any liability whatsoever, to any party that uses or relies on this drawing without AECOM's express written consent. Do not scale this document. All measurements must be obtained from the stated dimensions.



PROJECT
Partnership for South Hampshire Strategic Flood Risk Assessment

CLIENT
Portsmouth City Council on behalf of Eastleigh Borough Council

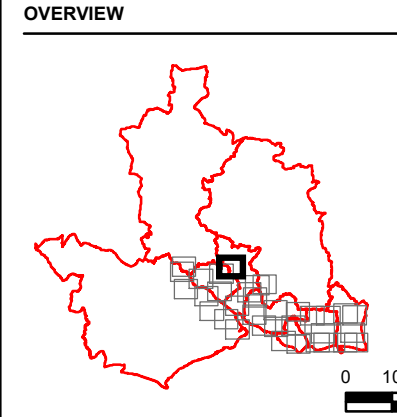
CONSULTANT
AECOM Limited
Sunley House
4 Bedford Park
Croydon, CR0 2AP
www.aecom.com

LEGEND

- Local Authority Boundary
- Southampton Model Extent

Maximum Flood Depth: Undefended 1 in 200 Year (0.5% AEP) 2122 Upper End

	0.0 - 0.1
	0.1 - 0.5
	0.5 - 1.0
	1.0 - 1.5
	1.5 - 2.0
	2.0 - 2.5
	2.5 - 5.0
	>5.0



NOTES

© Environment Agency copyright and/or database right 2022.
Reproduced from Ordnance Survey digital map data © Crown copyright 2022. All rights reserved. Licence number 0100031673.

This map is intended to provide a strategic overview and should not be used to assess individual properties. Refer to the accompanying SFRA Report for details of the datasets and purpose of their use.

ISSUE PURPOSE
For Information

PROJECT NUMBER
60653132

FIGURE TITLE
Maximum Flood Depth: Undefended 1 in 200 Year (0.5% AEP) 2122 Upper End
Sheet 4 of 4

FIGURE NUMBER
Figure 8

This drawing has been prepared for the use of AECOM's client. It may not be used, modified, reproduced or relied upon by third parties, except as agreed by AECOM or as required by law. AECOM accepts no responsibility, and denies any liability whatsoever, to any party that uses or relies on this drawing without AECOM's express written consent. Do not scale this document. All measurements must be obtained from the stated dimensions.

